

# Manchester Integrated Alcohol & Drug Early Intervention and Treatment Service for Adults

*safer communities,  
healthier lives*



[www.cri.org.uk](http://www.cri.org.uk)

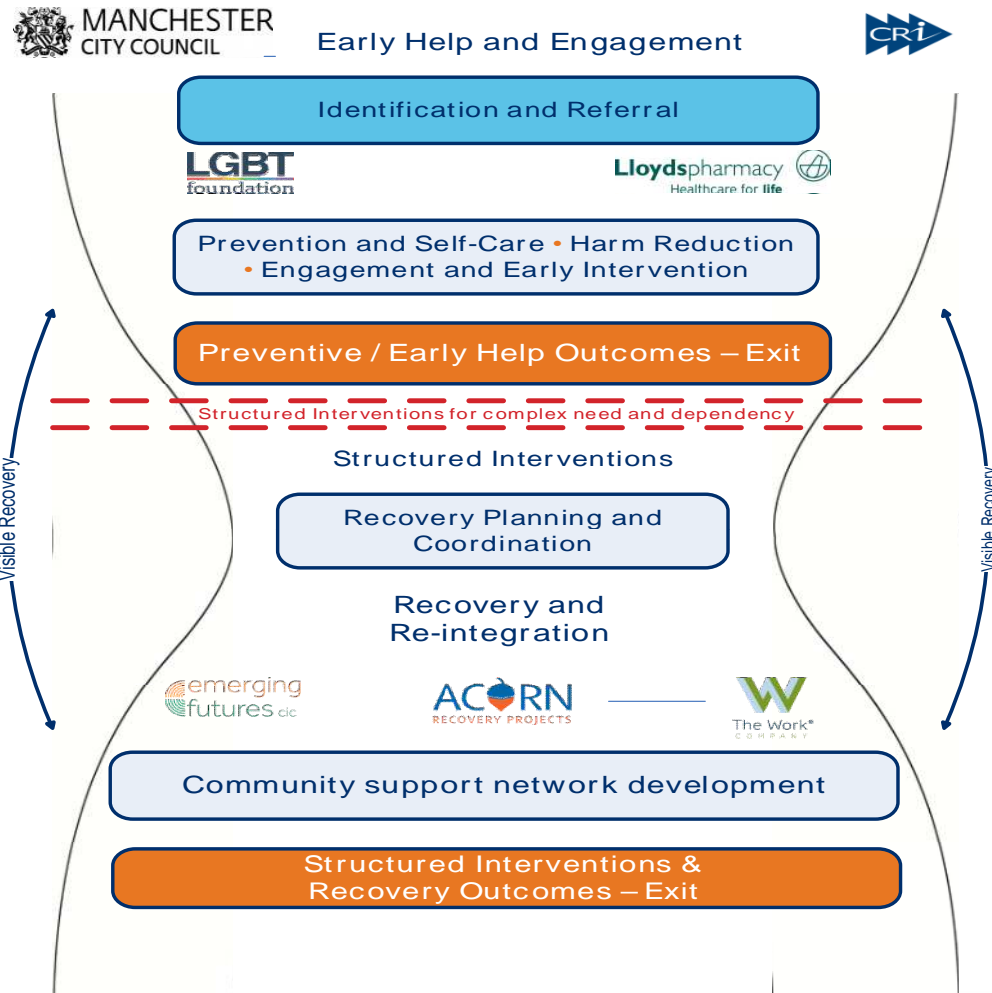
# Aspiration & Recovery

Our service will be responsive built on continuous learning, listening and best practice

Hubs will support initiation into treatment for high need and complex cases

We will develop outreach across the city into community venues, early help hubs and partner organisations

# Service Delivery Model



safer communities,  
healthier lives



[www.cri.org.uk](http://www.cri.org.uk)

# Sub Contractors

- Acorn
- CRC (Community Rehabilitation Company)
- Emerging Futures
- LGBT Foundation (Lesbian, Gay, Bisexual, Transgender)
- Lloyds Pharmacy
- The Work Company

*safer communities,  
healthier lives*



[www.cri.org.uk](http://www.cri.org.uk)

# Implementation Plan

- Clinical – Alcohol model, pathways
- HR- TUPE (transfer of undertakings protection of employment), consultations
- Data- safe secure data transfer
- Operations- New service operational from day 1-managing the transition
- Facilities- Changes to buildings to ensure suitable for new delivery model, community development
- Learning and Development- Up skilling of staff
- Communications- Stakeholders, regular bulletins, consultation with service users

*safer communities,  
healthier lives*



[www.cri.org.uk](http://www.cri.org.uk)